



Good

After-

Noon

LLL-Diagnostic & Therapy in Veterinary Practice



Presented by

Dr. med. vet. Andy Roesti
Switzerland

My paradigm of life is

- Men, animals, plants, stones are
- vacuumised
- light-emanating
- Water- & salt-bags
- with a soul
- and sometimes some spirit



Main topics

- 1. Vacuum
- 2. Aura, LASER
- 3. Water & Salt

01.05.11



1. Our Body consist of 99,999% Vacuum !!!



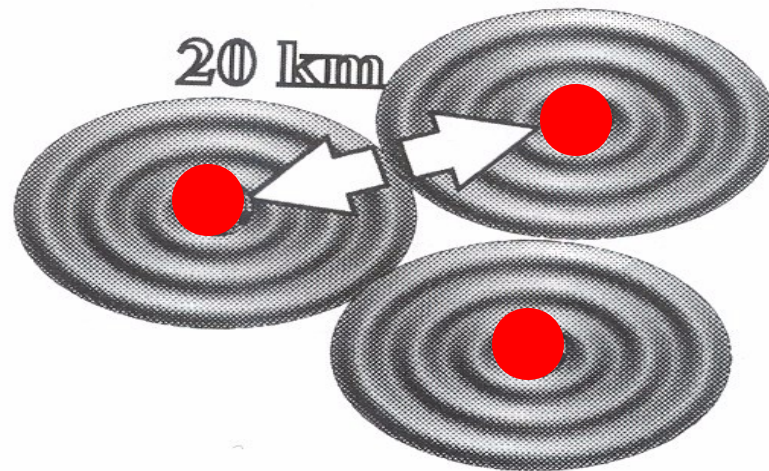
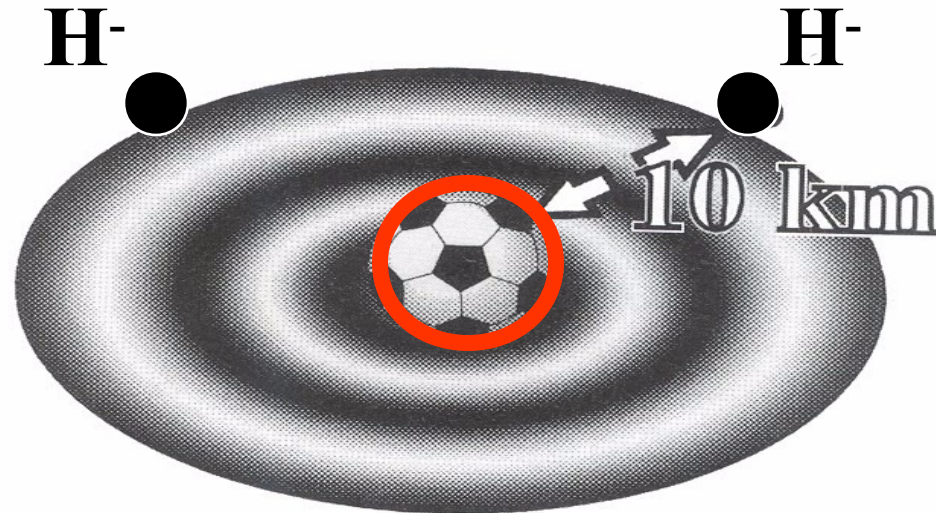
Warnke

- Vacuum is the space without any material and emanation, but full of virtual fluctuative activity →
“Cavity-Quantum-Electrodynamics“ or
„Zero-Point-Vibration“
- Vacuum is the source of all coherent information (LASER),
the so called morphic field,
the base of our consciousness



H₂O: Mass – Vacuum Relationship

We consist
of ~75 %
Water

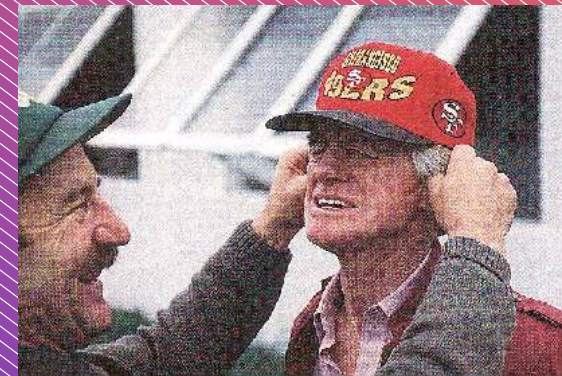


01.05.11

Which fields fill the Vacuum ?



- Qi of Higgs-Vacuum
- Electromagnetic zero point vibration of the Photons (Casimir-Effect)
- Electromagnetic Qi of Electron-Positron-Pairs (Vacuumpolarisation) and fluctuation of the Quark-Antiquark-Pairs
- Gravitation and Levitation



Everything is Bi-Polar: YIN & YANG

- Space & Time and Antispace & Time
- Contraction and Expansion
- Chaos (Entropy) and Coherence (Negentropy)
- Gravitation and Levitation
- Low potencies $<D^{24}<$ High potencies
- Centripetal and Centrifugal, GV 20 - KI 1
- Physical DNS and Psychic Bio-Photons
- Particle-Wave Dualism (Radiation Process)

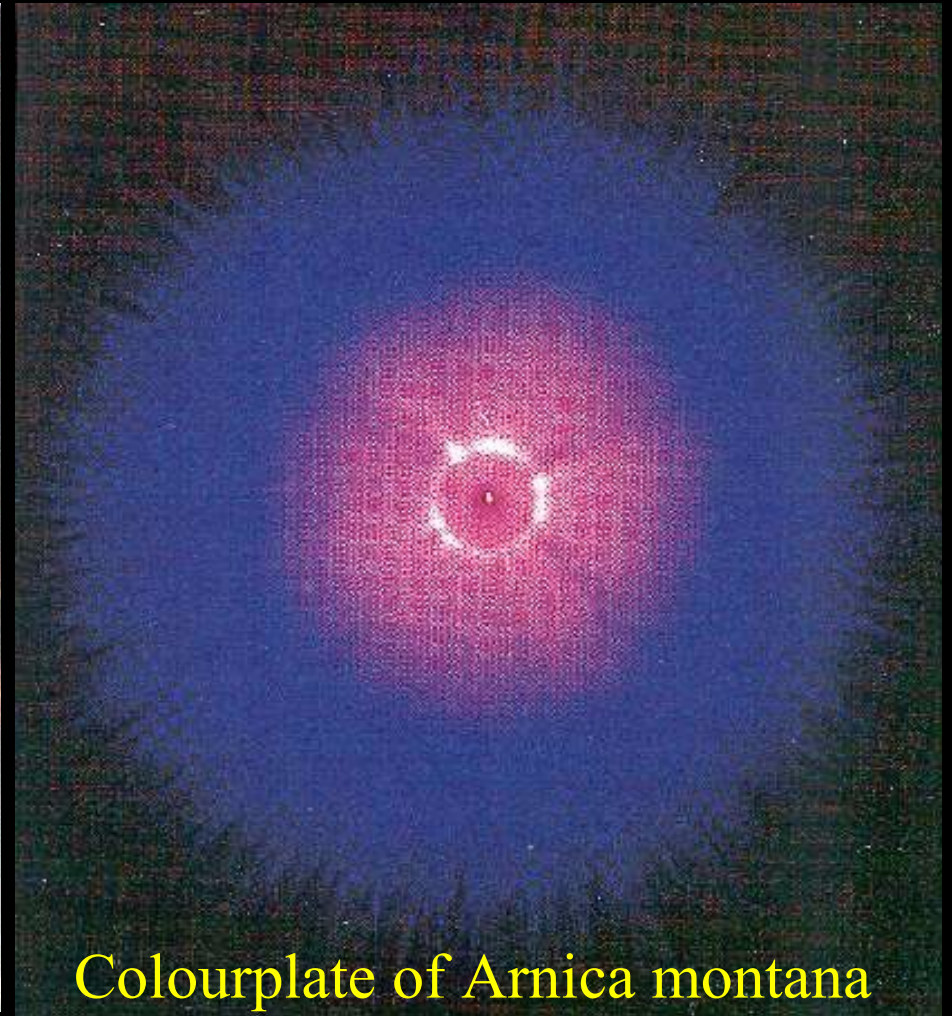
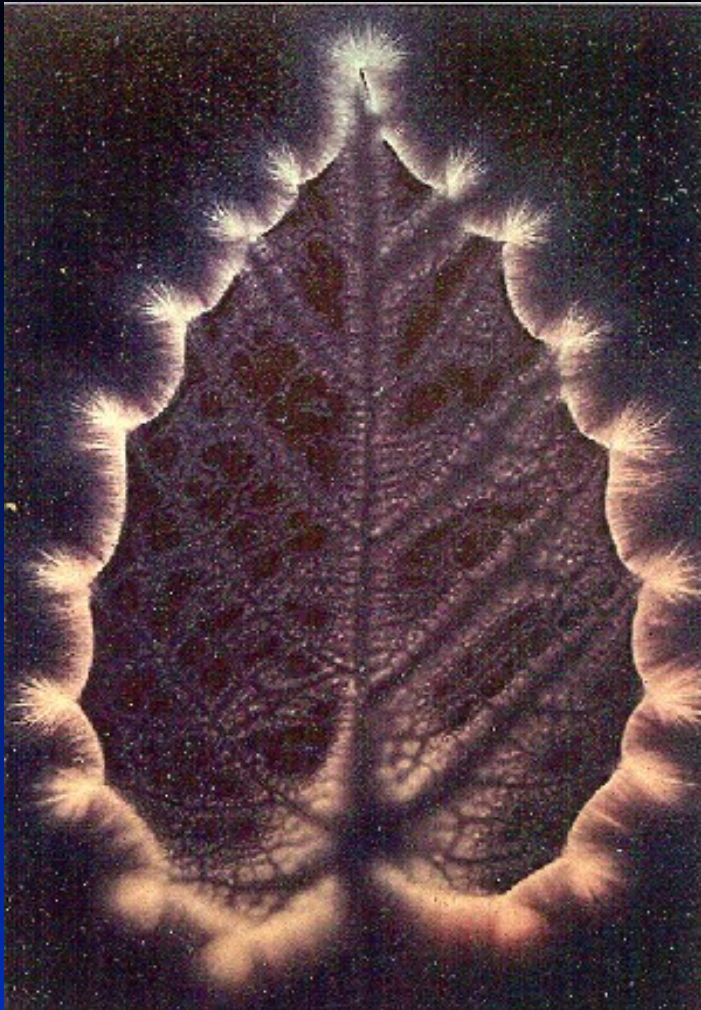


2. The Aura ≡ Electromagnetic Emanation

- The Aura (radiation process) of any creature is the cybernetic light emanation of the coherent polarised photon-pool of the mitochondria and cell-nuclei
- Fermions and Bosons are special oscillating conditions of the ethereal vacuum
- The Aura consists of electrical-, magnetical-, electromagnetical-, acoustic- and LASER emanation



The electromagnetic Emanation



Colourplate of *Arnica montana*

01.05.11

Vonarburg

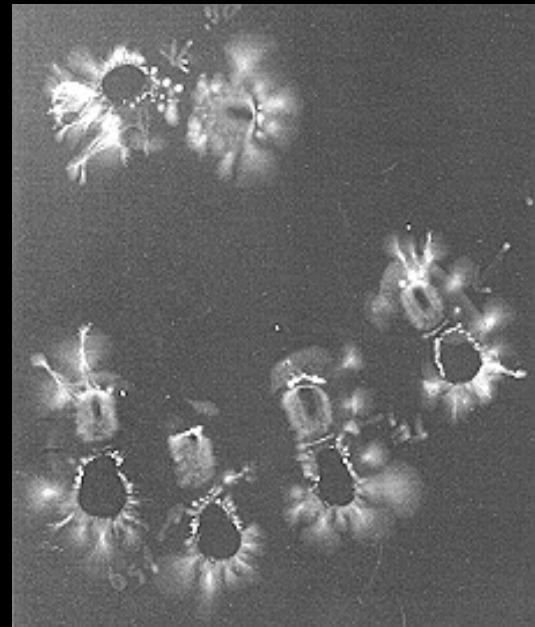


Men & Animals have a

- **Physical Aura**
- **Astrale Aura**
- **Psychic Aura or
Emotional Aura**
- **Mental Aura**

**Anatomical Representation of
the Acupuncture-Meridians
Main- and secondary Chackras**

Aura: Kirlianphotography





Men

**Infrared-
Photography
(Guljajew / Godik)**

**All 4 Aura-
Layers are
very good
visible**



**The Aura surrounds
the body in all three
dimensions**

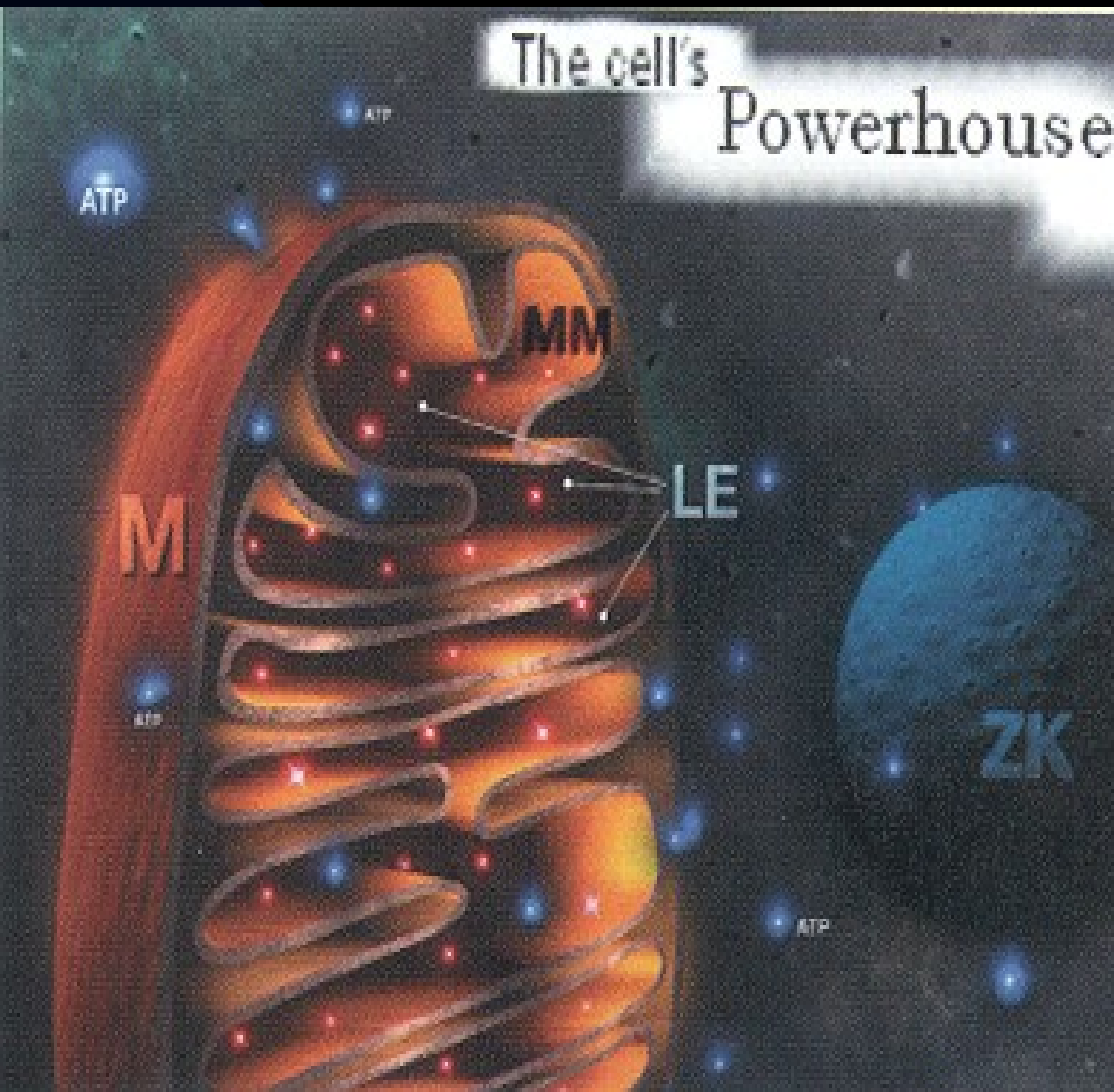
**In the same way all
Energies around the
body (cosmic Qi etc.)
flow from all around
into the Chakras**

Damaged Aura: Disc-Prolaps



01.05.11

The Mitochondrial Radiation



M = Mitochondrion

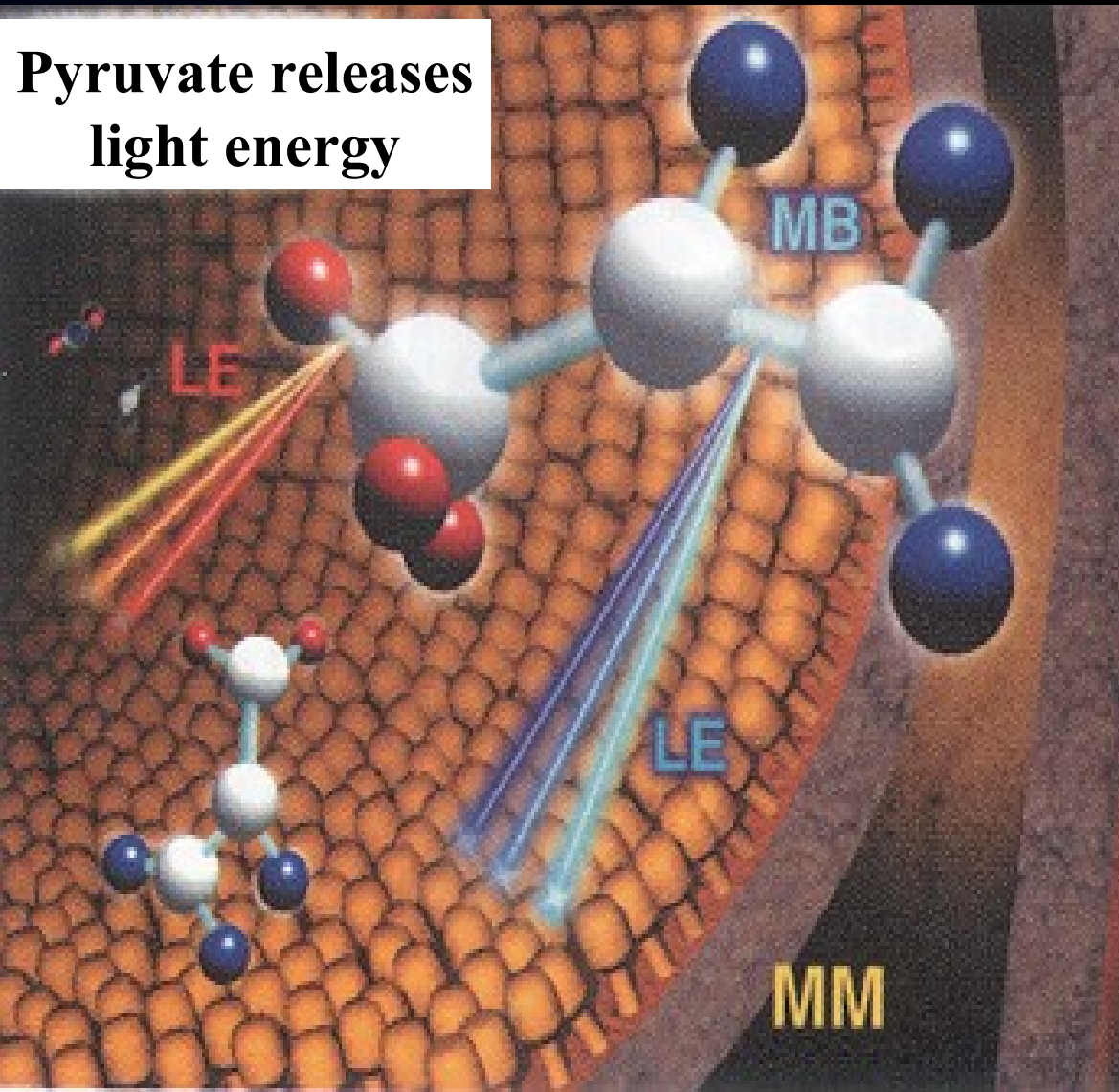
MM = Mitochondrial Membrane

LE = Light Energy

ZK = Nucleus

Energy Transfer – a Radiation Process

Pyruvate releases
light energy



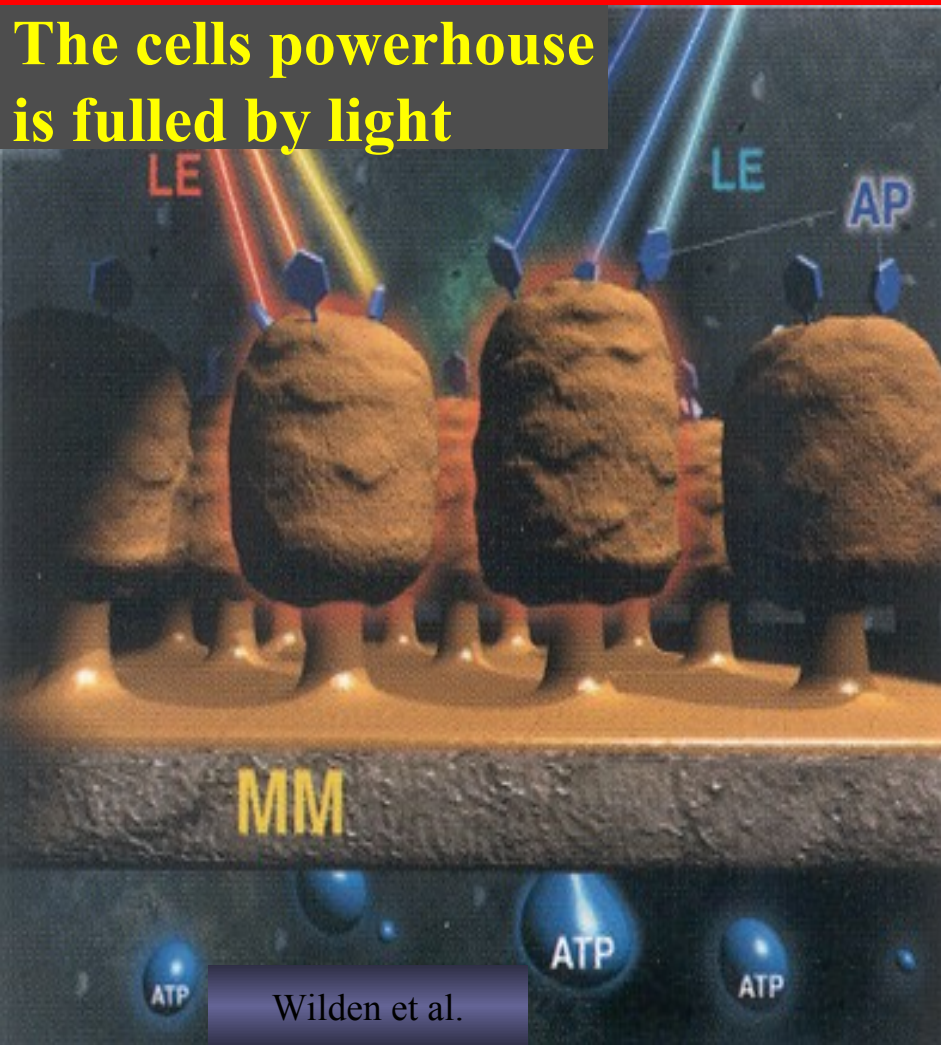
**MB = Molecular
electromagnetic
Bond energies**

**MM = Mitochondrial
Membrane**

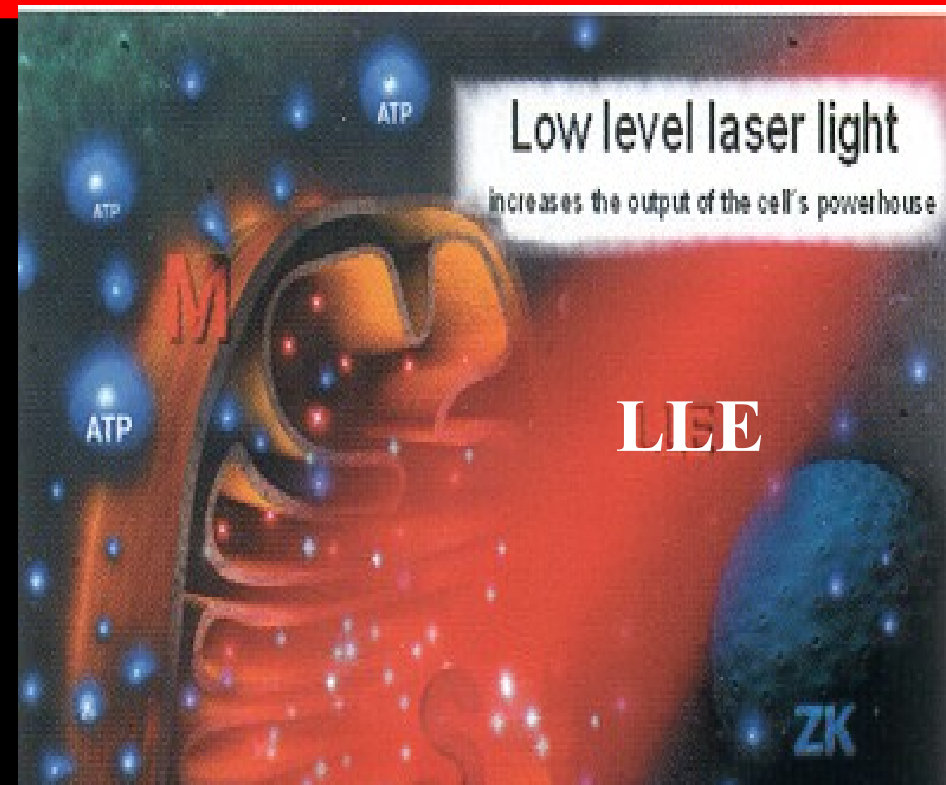
**LE = Radiation
process
(LASER)**

Molecular bond energy (LE) irradiating the inner mitochondrial membrane (MM) is absorbed by the latter's structures (AP=antennae pigments) and utilized for ATP synthesis

The cell's powerhouse is filled by light



Wilden et al.



Immediate stimulative effect of electromagnetic radiation (LLE/LLR) irradiating the cell from

Wilden et al.

There are different aspects of the Aura

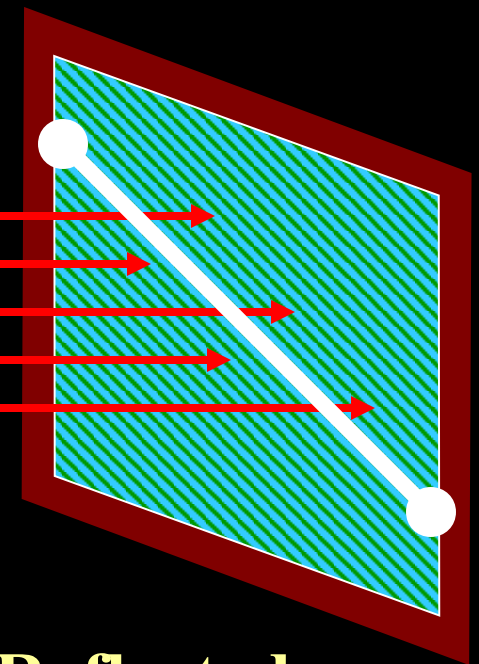
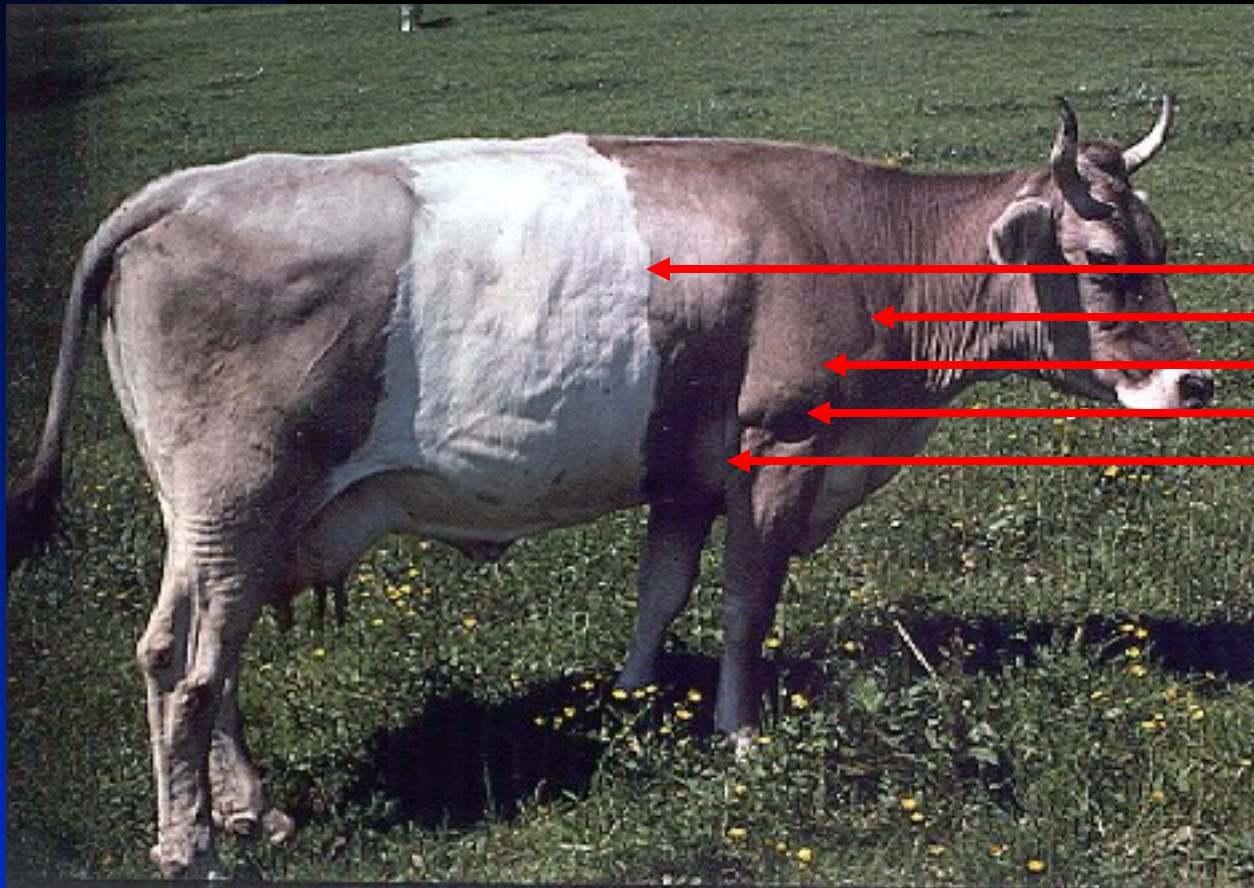
- The physical-, aetherical-, emotional- and mental body
- Therapeutically we can influence this nonmaterial aspect of any creature e.g.
- LASER, Aura-Somas, Pomanders, Master-Quintessences, Flower Essences, Intuition and Instinct
- The Aura can be measured in it's quantitative and qualitative aspect by means of a Reflection-Polaroid-Filter



- The quantitative aspect of the Aura is the distance from the patient to the Reflected-Polaroid-Filter
- In an oscillating patient the Aura ranges between 5 to 30 cm
- In a healthy or balanced horse e.g. the Aura emanates for approximately 1 m
- The qualitative aspect of the Aura is the deviation from the Orthopathy in $<^{\circ}$
- In a sick patient we always deal with a Heteropathy of 15° to 45° , till 90° in cancer

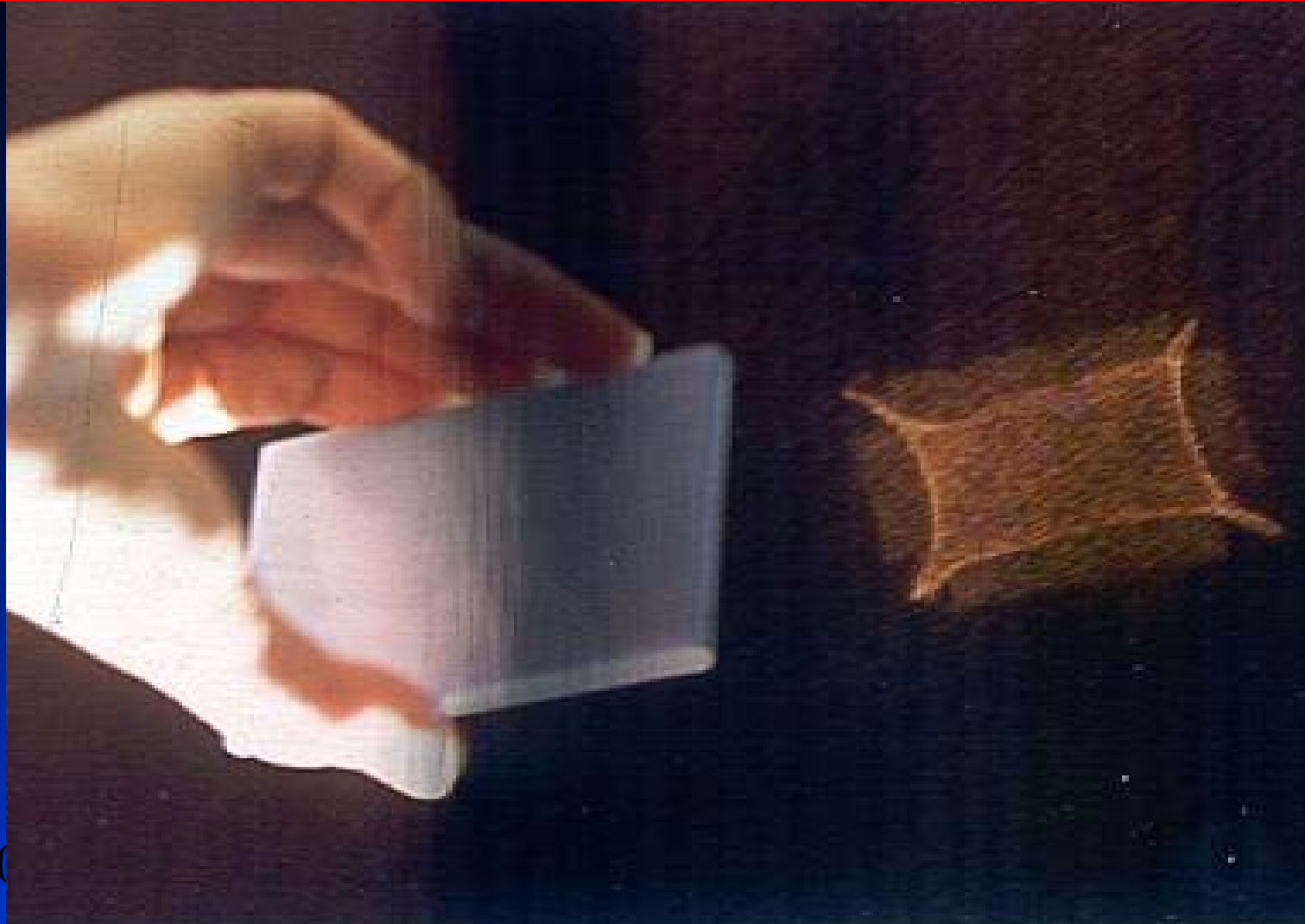
Aura- / Electro-Magnetic- Emanation

Quantitative Aspect



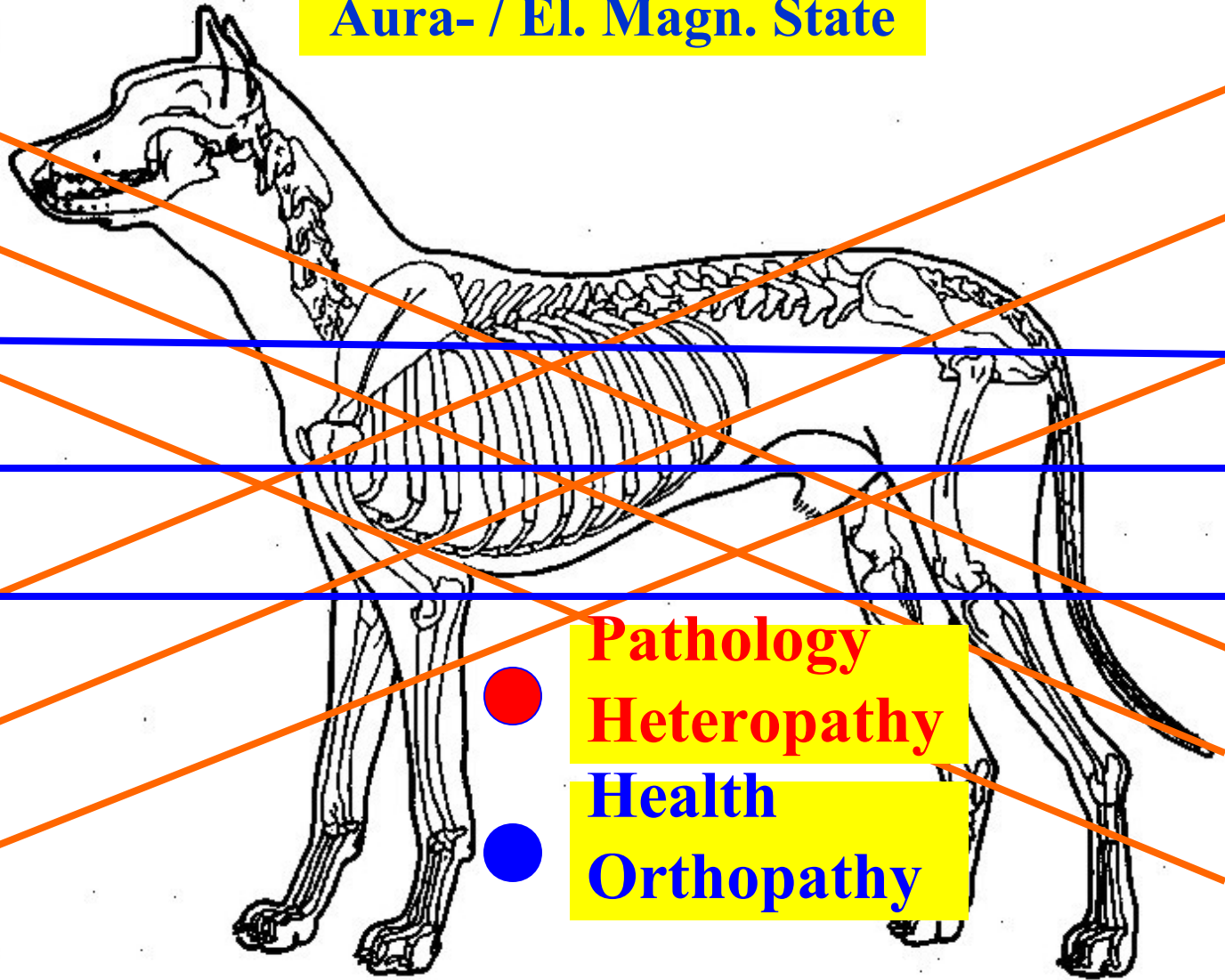
**Reflected
Plaroid Filter**

Measurement of the Aura: Quantitative Aspect



Aura: Qualitative Aspect: $<^\circ$ (e.g. 30°)

Aura- / El. Magn. State



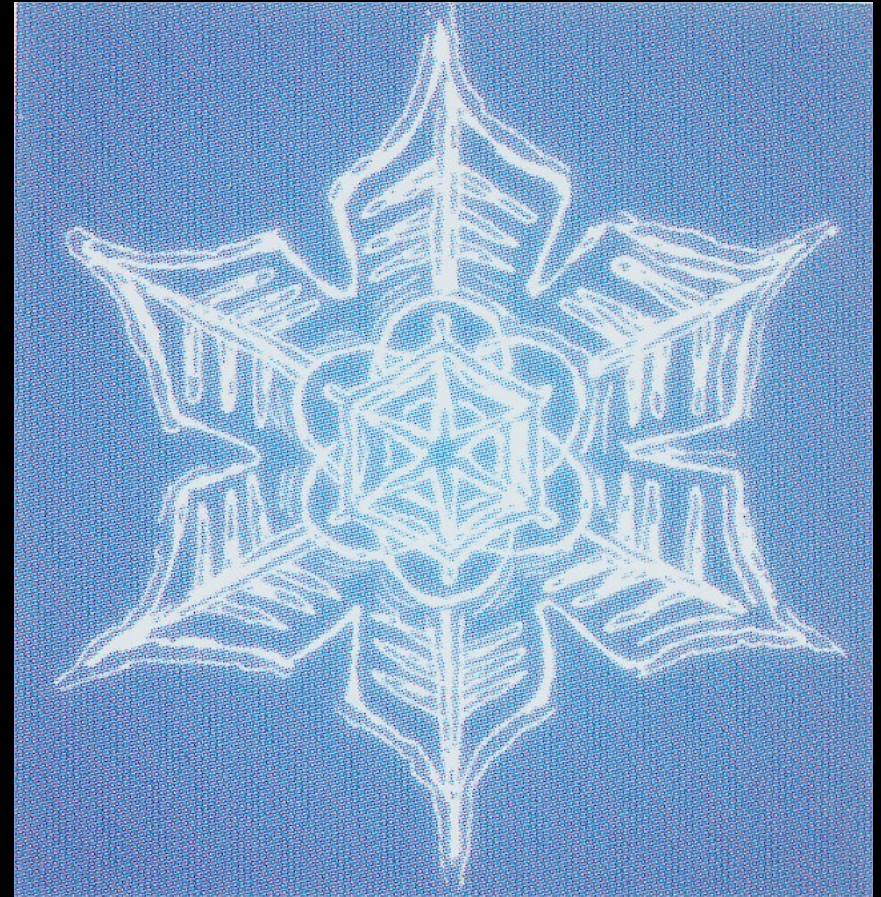
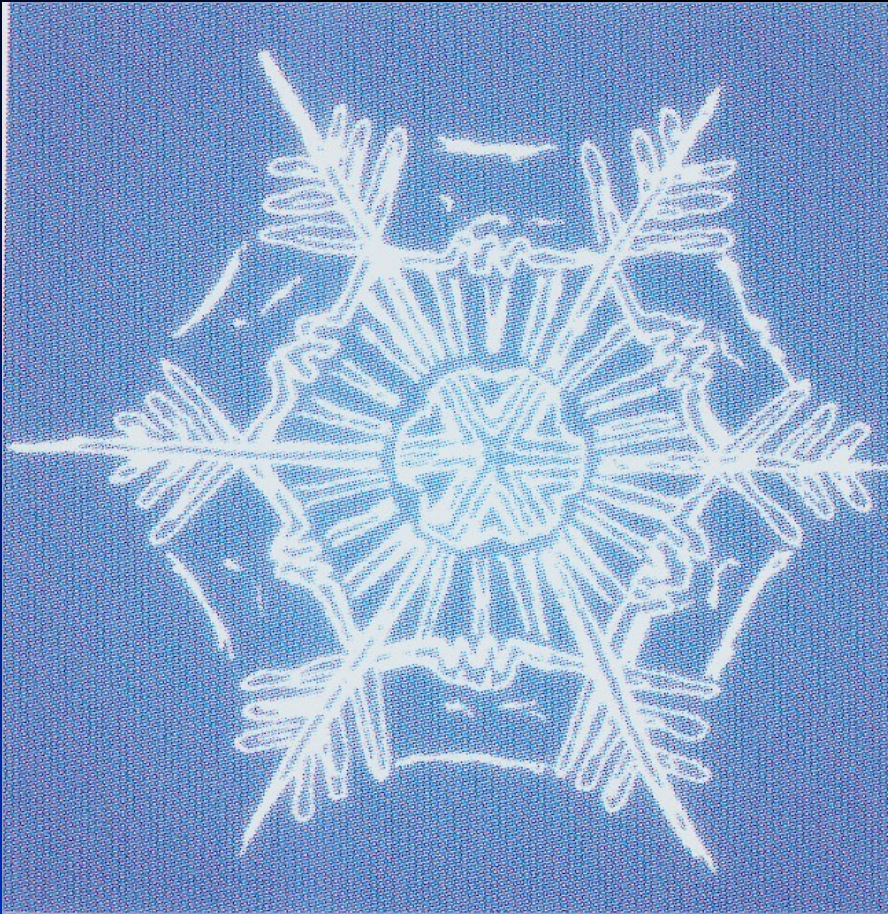
● Pathology
Heteropathy
● Health
Orthopathy

3. Natural Rock Water & Cristal-Sole-Salt

- Rock water is the carrier of rhythm & life
- The aboriginal source of what we are calling the consciousness
- Can integrate manifold information as hydrated (bound into molecules) or viscinal (marginal) cell water
- Sweet water is positively loaded
- Sea water is negatively loaded



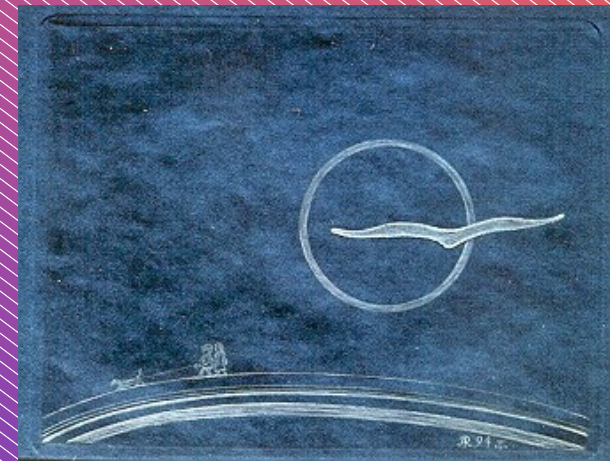
Water Crystals – Snow Flakes



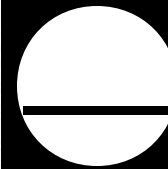
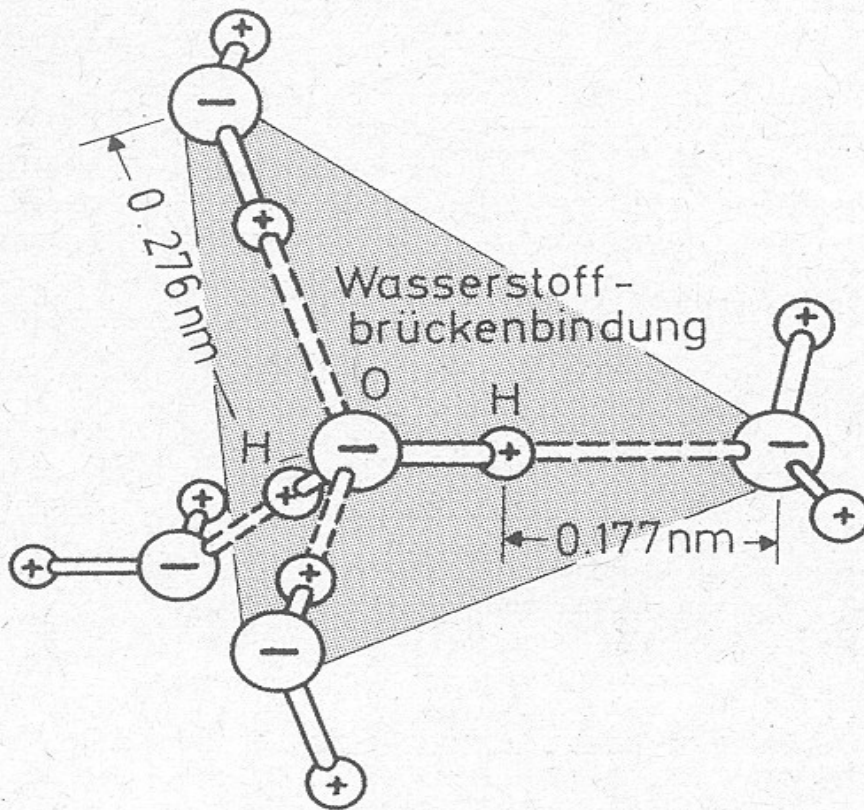
01.05.11



- During the rising moon the water revolves a right spin
- During the moon on the wane the water revolves a left spin
- Water is able to form Clusters
- Clusters are very large gathering H_2O molecules with a net-like structure
- Water is polarised and possesses dipole character



Water - Cluster, Dipol



Oxygen



Hydrogen

In such a constellation it is Rock-Water, has a memory and is a reservoir of information



- Water is emanating a specific electromagnetic oscillation by endless overturning-, nodding-, rotating- and longitudinal movement (Brown-Molecular-Movement)
- It is able to produce π Kinks (Pseudomembranes, viscinal water)
- The angle direction of the two H^+ atoms is $105,4^\circ$ and is rock water, otherwise it is waste water

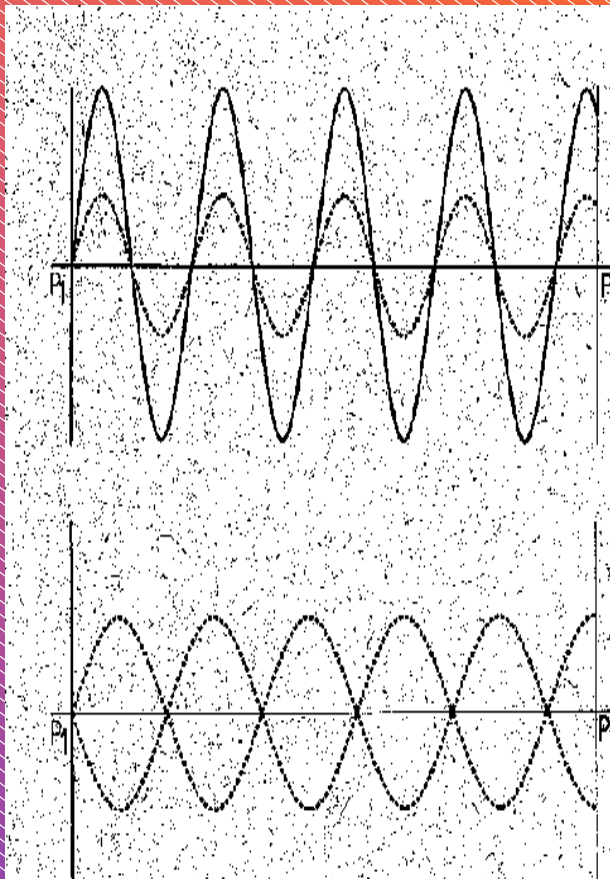




- Water potentised or dynamited, according of the laws of Hahnemann, with any material, is able to amplify information of structure-memory and structure-variability, which is becoming clearer and clearer
- By Levitation (the opposite force of Gravitation) of the water, the fluidum is able to get rid of the material involvement of density (axial centripetaion) & speed (radial centrifugation)



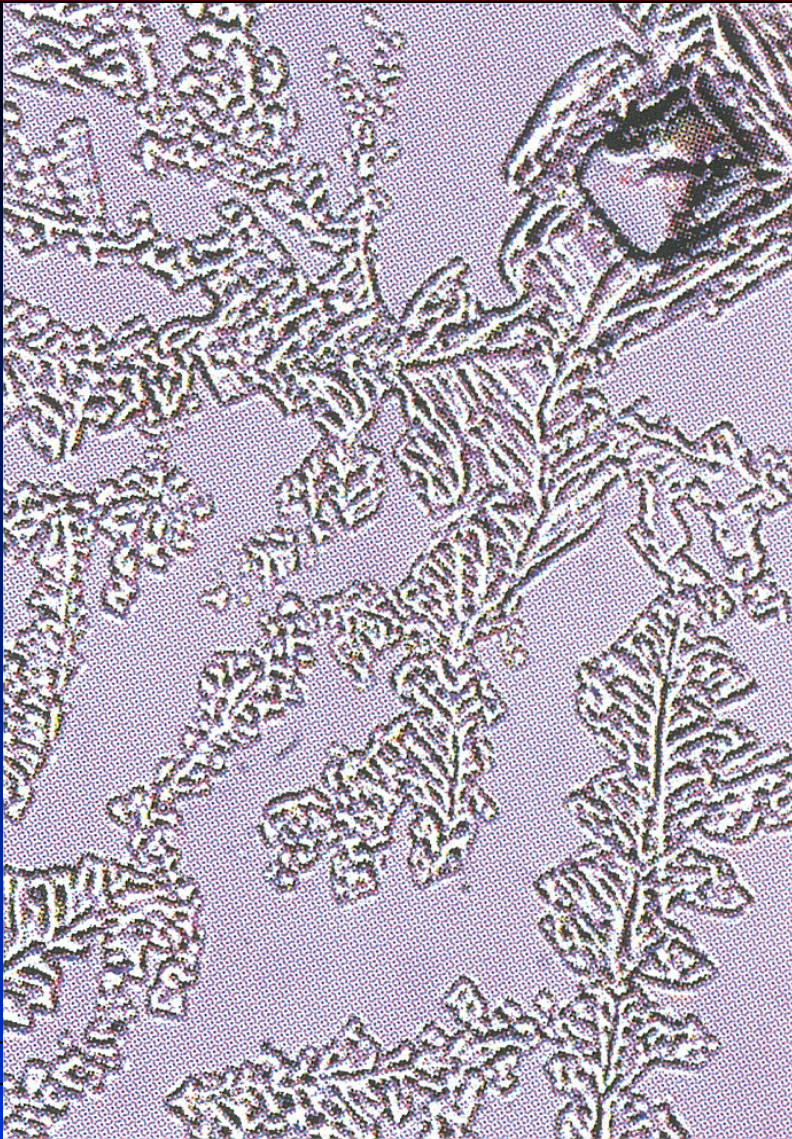
Constructive and destructive Interference



Cristal-Sole-Salt and not NaCl

- **Himalayan cristal salt. In it's biophysical structure remains the energetic information. The atomic salt grid is bound through biophotons and contains 84 Oligo-elements. The base of biological life**
- **It needs 800 °C to melt that Himalayan salt, but it needs only common rock water to hydrate theese cristals without extra energy**

Cristal-Sole Salt & NaCl



NaCl with Halogenes

- Our kitchen salt is purified NaCl
- Enriched with highly toxic iodid (J) or iodat
- Enriched with fluoride (F). A yellow-green, pungeant smelling gas
- They produce Nitrosamines, which are utmost aggressive cancer promoting agents

What is the Soul ?

- Popp is postulating, that the coherence of the Biophotones is the bridge to higher dimensions

- Coherent LASER light connects wave and particles between potential- and actual information

- Animals open the door to the soul → → → →

- Material is nothing

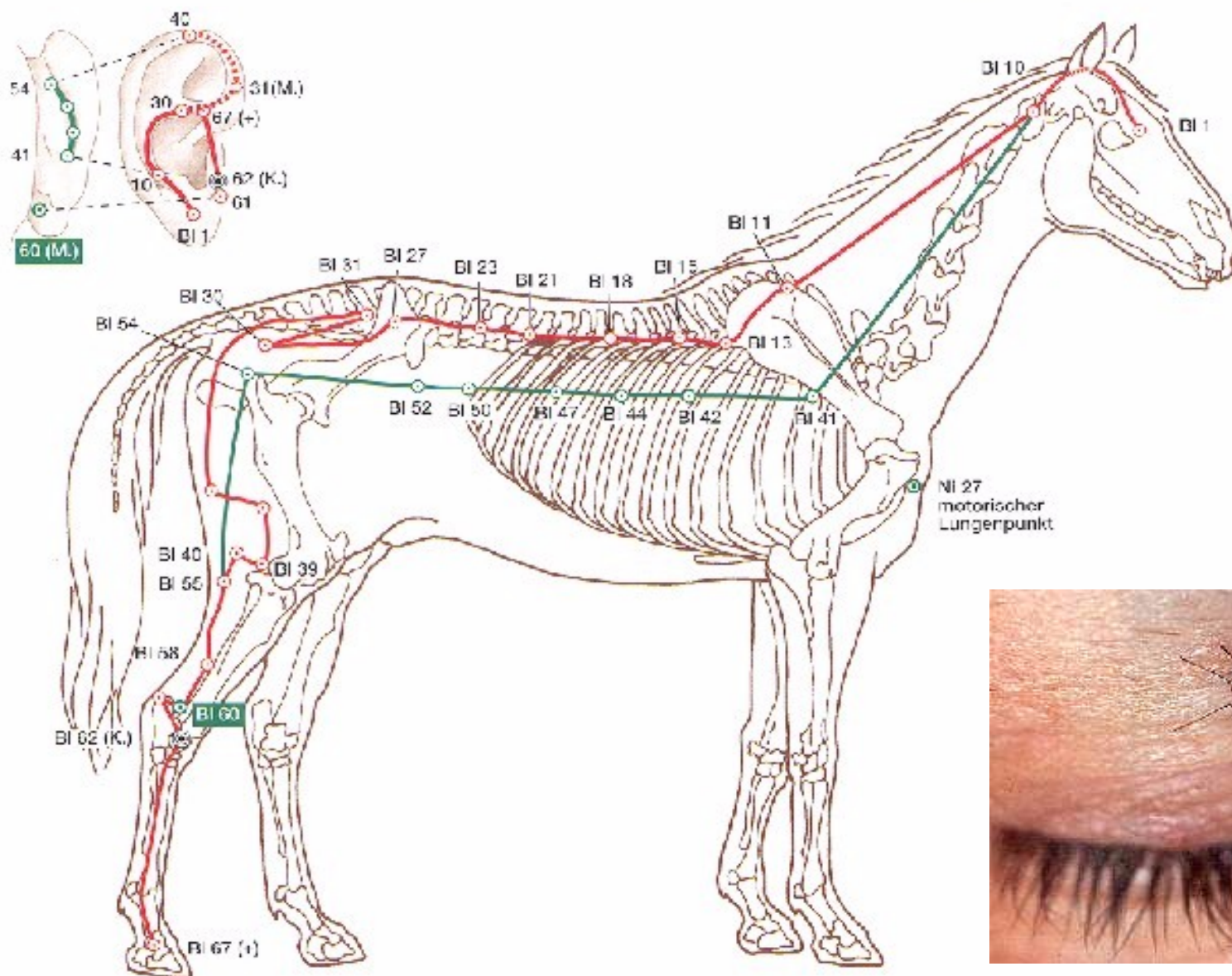
- Nothing is material (Buddha)



Nogier Frequences

- Fr. A, 292 Hz:** Disturbancy fields, Fr. of disorder (Tumours, Inflammations, Scars) All openings of the body. Subtragal at the ear
- Fr. B, 584 Hz:** Nutritive-metabolic problems. N. Vagus, Parasympathetic aspect, Ear-Concha
- Fr. C, 1168 Hz:** Locomotion: Arms and Legs: Bones, Muscles, Tendons, Ligaments, Mesenchymal Information. Ear-Scapha, Fossa triangularis and Anthelix
- Fr. D, 2336 Hz:** Tranquilliser Fr. of Commissurae and Corpus callosum, Laterality, Governing Vessel, Ear-Tragus
- Fr. E, 4672 Hz:** Anti-Pain: Sympathetic aspect, Marrow, Endocrinium, Conception Vessel, Ear-Helix to Darwin Point
- Fr. F, 9344 Hz:** Brain stem, Thalamus, Hypothalamus. Head, Jaw and Neck. Emotions, development and age of sexual maturation. Ear-upper part of the Lobules
- Fr. G, 146 Hz:** Prefrontal brain zone (Frontal- and parietal lobe). Sinuses, Eye, Nose. Ear-lower part of the Lobules

Bladder main channel & muscular aspect



LLL Therapy, Peritarsitis, Wound



01.05.11

LLL Therapy: V-Technique & Transversal Irrigation

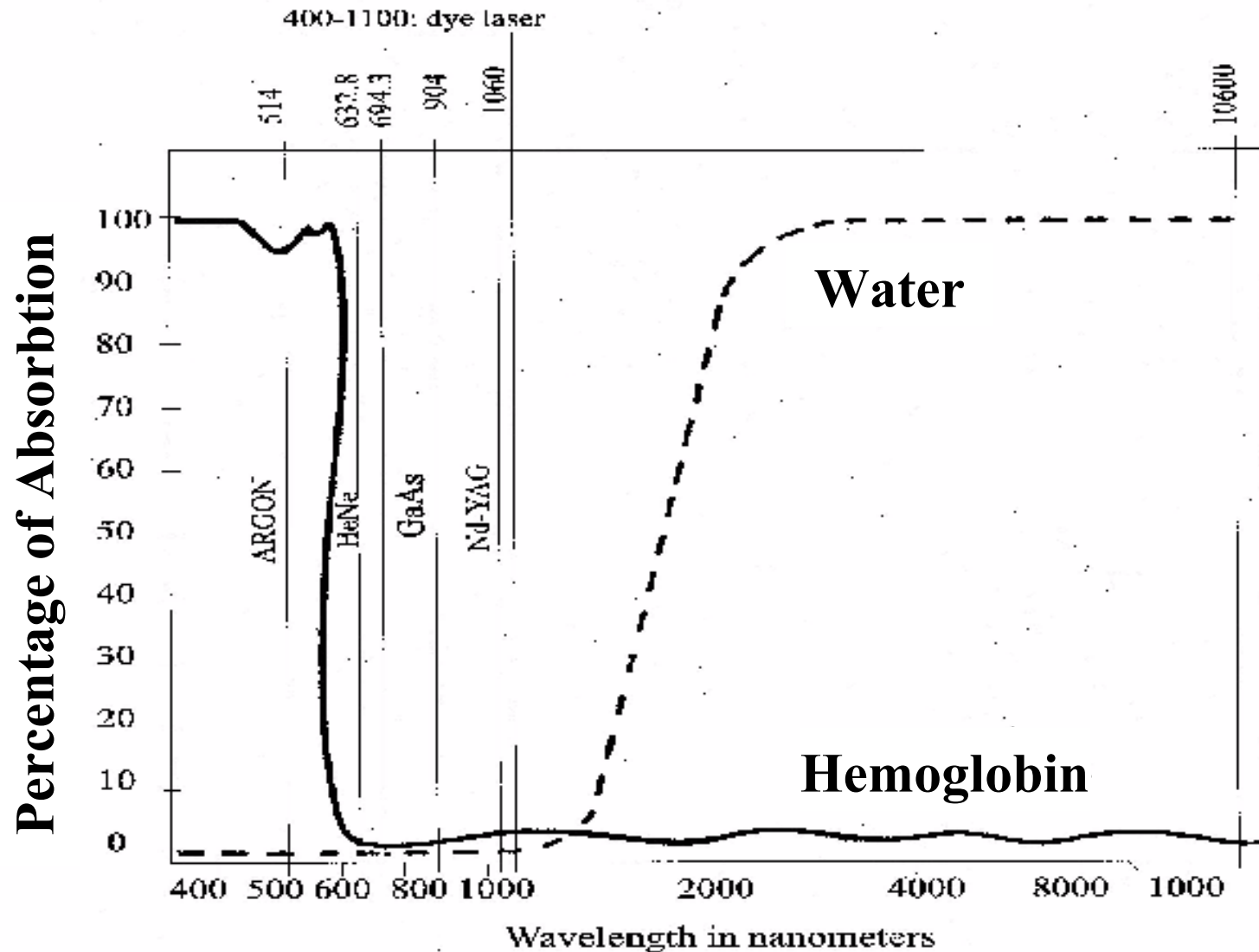


IR Scanner Laser: Tendinitis



01.05.11

Percentage of Absorption, Optical Window



IR & Green LASER pass Water



**IR LASER, 830 nm, passes Vine,
Green LASER, 523 nm, doesn't**

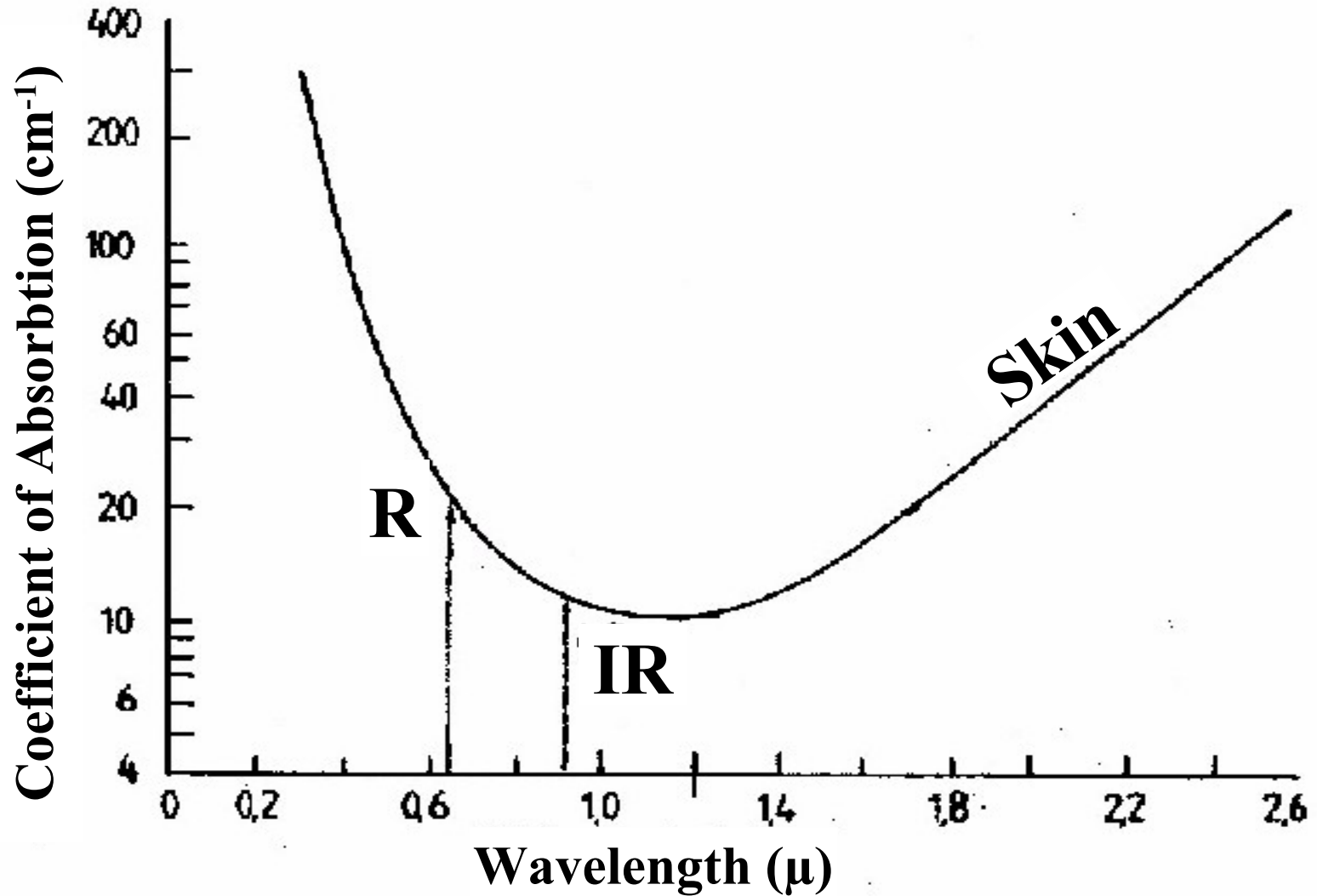


Green Laser: Couronnement



01.05.

Penetration of red & infrared irradiation into the skin



Nailsting in a claw: LASER-therapy in Practice: green 523nm, IR 830 nm



Bahr-Frequencies

- Fr. 1, 599.5 Hz:** Affinity to the sympathetic nerves: **deep tissue** layer (Qi-mobilisation)
- Fr. 2, 1199 Hz:** Affinity to the parasympathetic nerves **middle tissue** layer (Qi-transfer)
- Fr. 3, 2398 Hz:** Affinity to the Conception Vessel: **superficial tissue** layer (1st Alarm-Reaction of the body) (**YIN**)
- Fr. 4, 4796 Hz:** Affinity to the Governing Vessel: **superficial tissue** layer (1st Alarm-Reaction of the body) (**YANG**)

Fr. 5, 9592 Hz: **Anti-Oscillating** Frequency.
Frequency of order and stability.
Affinity to the Thymus and for
verification of the Cardinal-
(Opening-Points)

Points

Fr. 6, 149.8 Hz: Affinity to the Governing Vessel,
Mute (hidden), **psychic disturbances**
→ Bach, Californian, Australian Bush
and Swiss Alpine Flower Essence
Therapy

Fr. 7, 299.7 Hz: Affinity to the Conception Vessel,
Chacras, **Teeth disturbancy fields.**
Aura-Soma Therapy

01.05.11



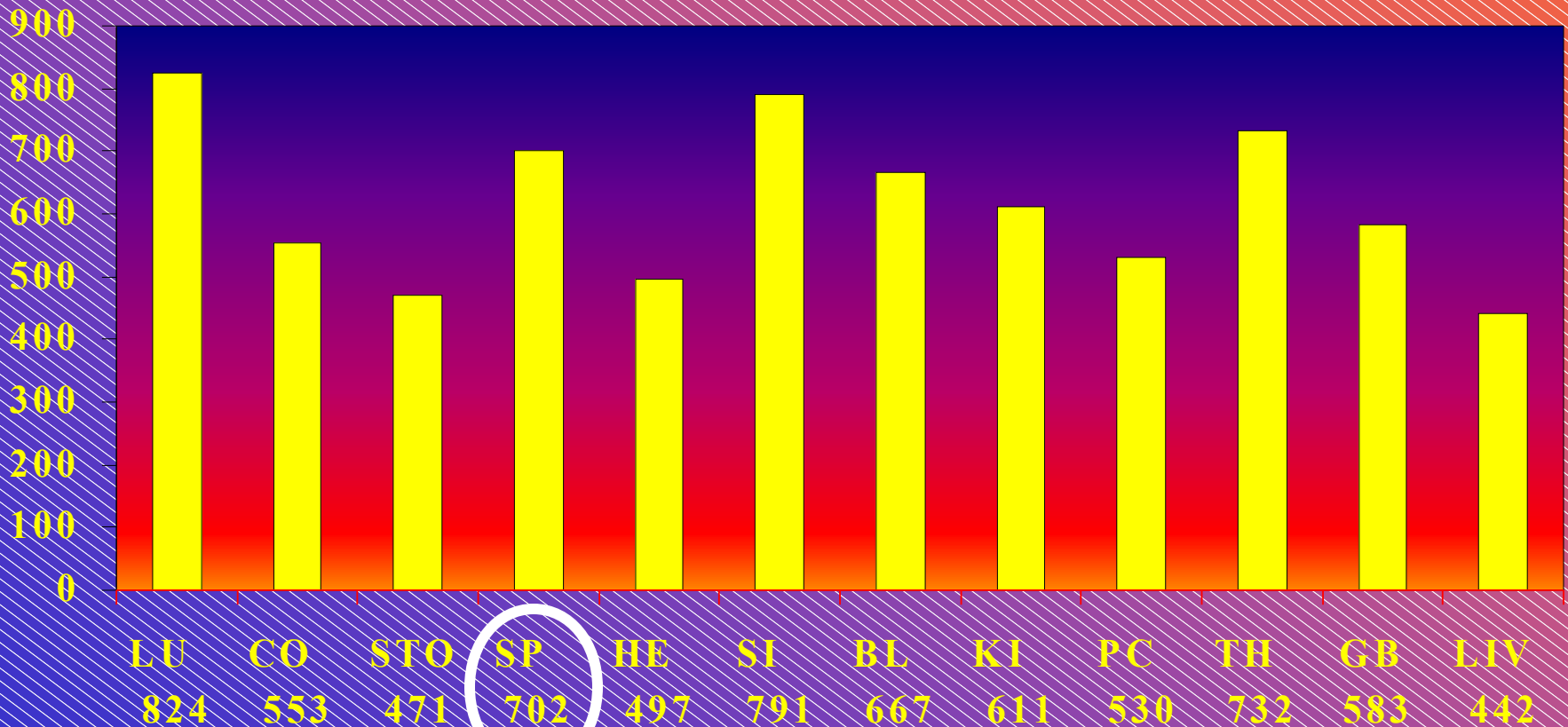
The Anti-Frequencies from **Nogier & Bahr**

Fr A	\leftrightarrow	Fr 5	/	Disturbancy	\leftrightarrow	Anti-Oscillating
Fr B	\leftrightarrow	Fr 4	/	Metab.-nut.	\leftrightarrow	GV/Oligosols
Fr C	\leftrightarrow	Fr 3	/	Locomotion	\leftrightarrow	CV/Heavy Metals
Fr D	\leftrightarrow	Fr 2	/	Tranquill.	\leftrightarrow	Parasympathetic NS
Fr E	\leftrightarrow	Fr 1	/	Pain	\leftrightarrow	Sympathetic NS
Fr F	\leftrightarrow	Fr 7	/	Head-Neck	\leftrightarrow	Teeth Disturbances
Fr G	\leftrightarrow	Fr 6	/	CNS	\leftrightarrow	Mute Disturbances

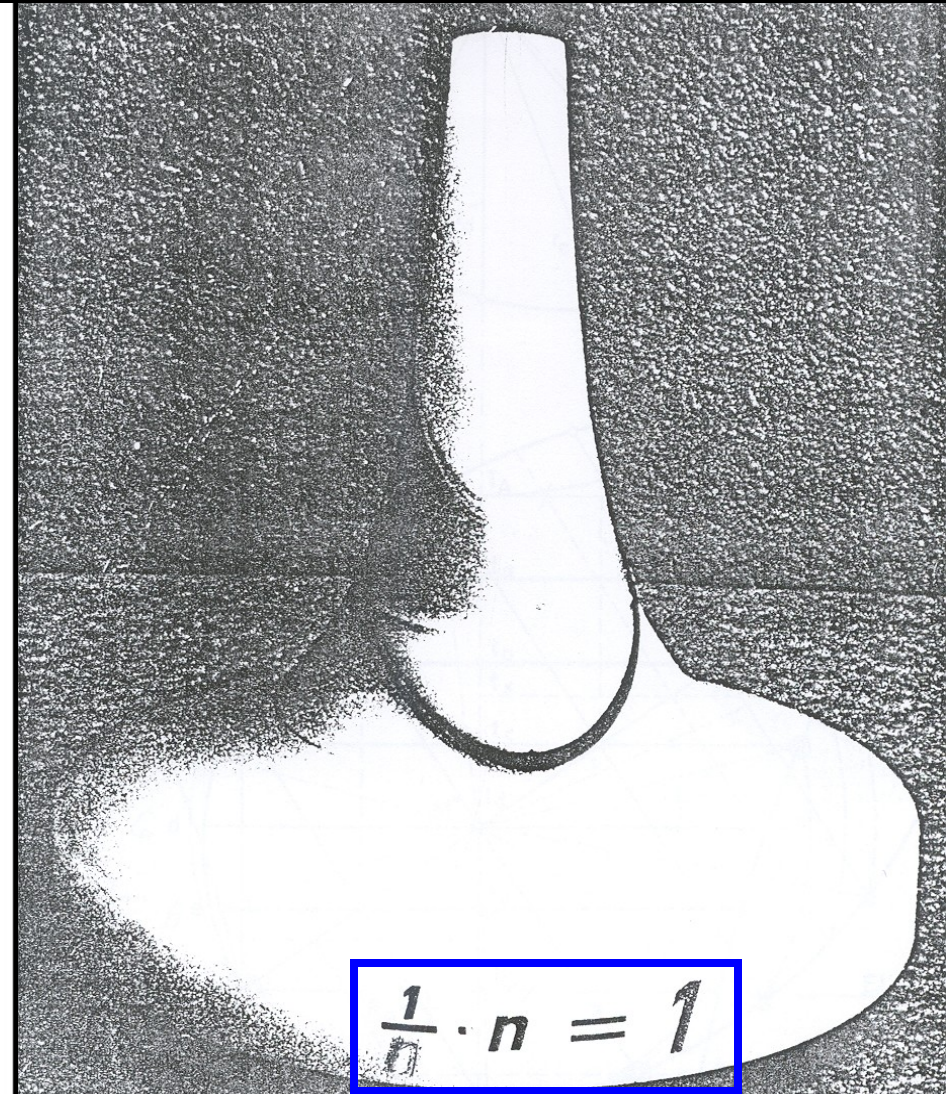
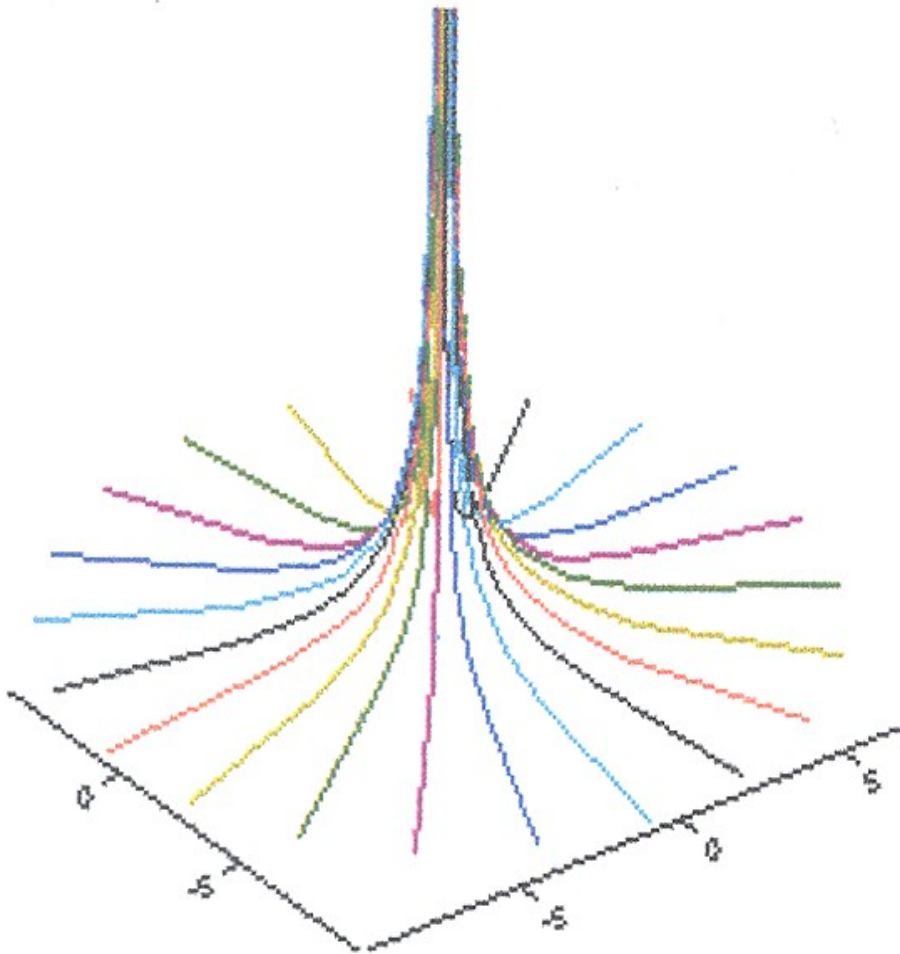


Zang / Fu or Meridian Frequencies acc. Reiningger

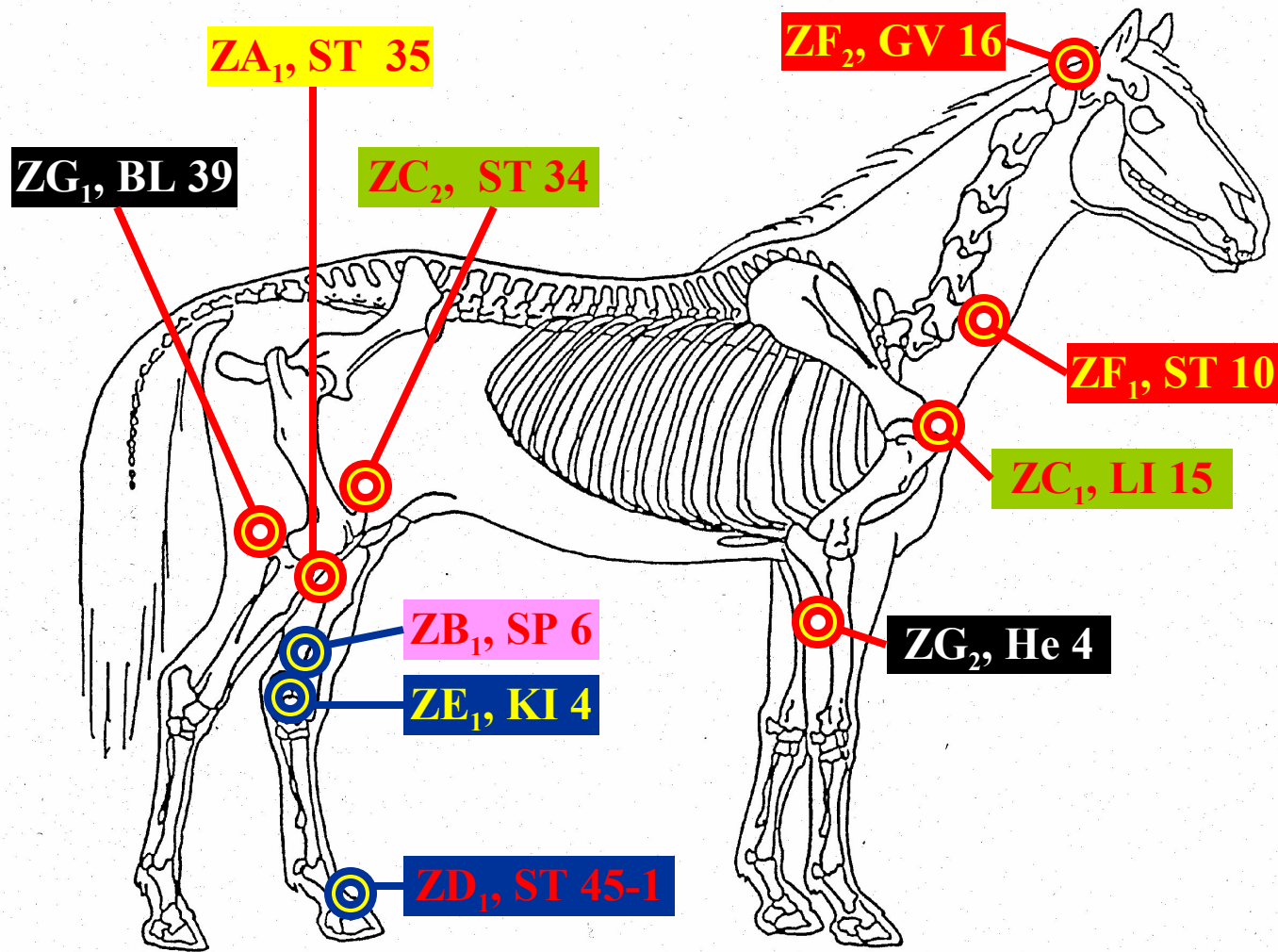
Hz

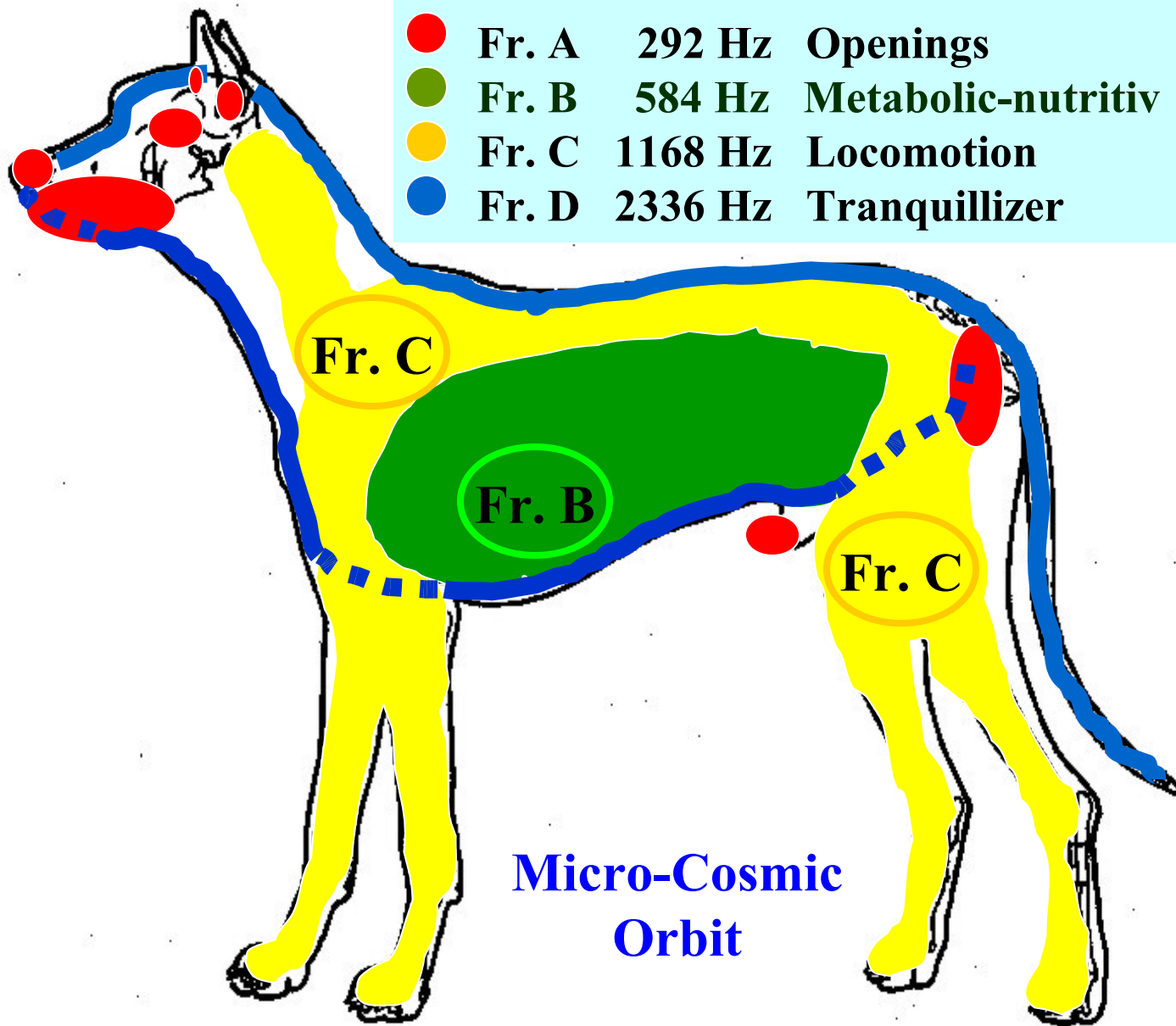


Tone-Cone of Schauberger



LASER – Puncture and the Zone-dominant Points of the Fr. A - G

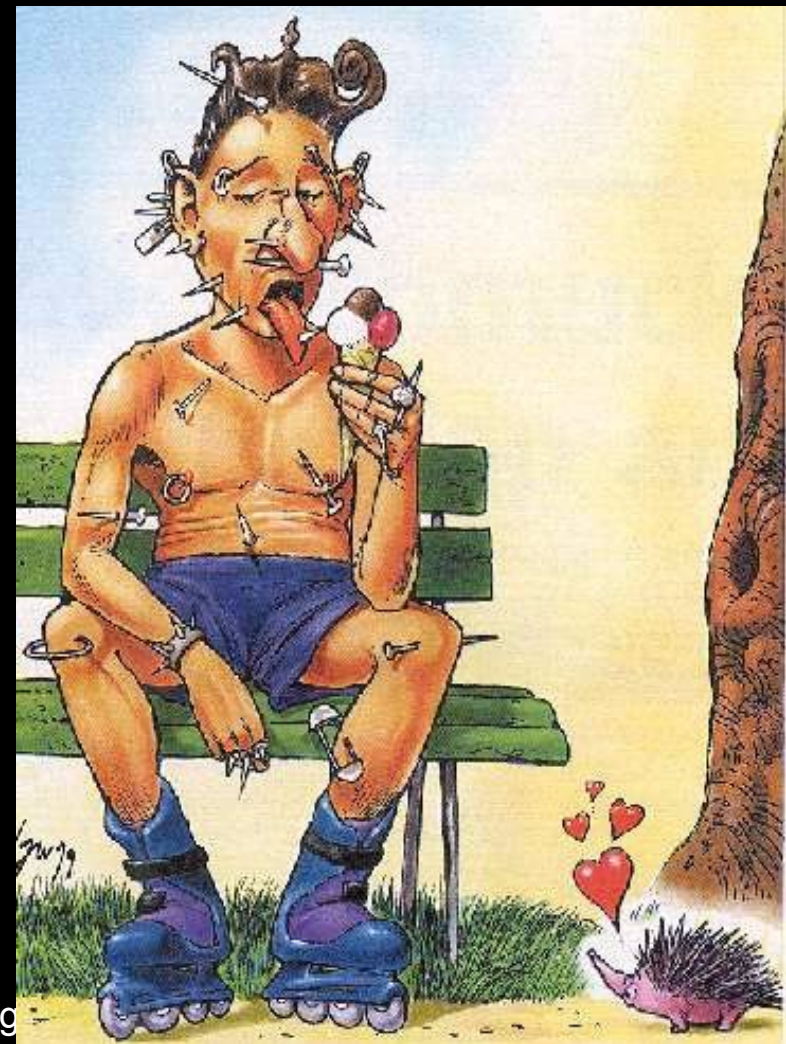




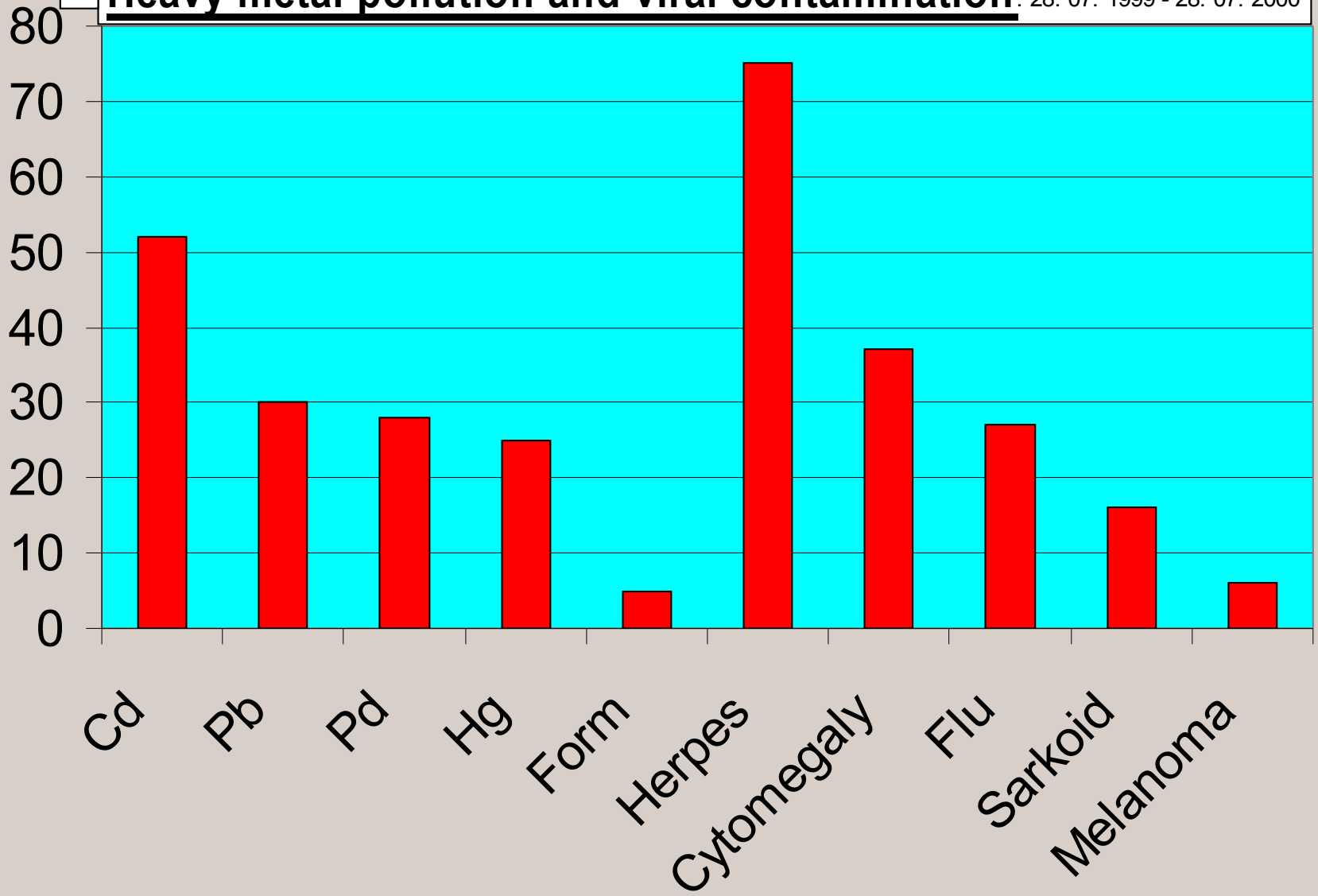
Oscillation Definition

- Normally we obtain always the same reflectory answer, whenever the same stimulus is provoqing the bodies surface. On the other hand we obtain in an oscillating body always a different reflectory answer
- Aethiologically it is supposed to be a disturbed irritaion of the formatio reticularis in the brain stem, which is provoqued through manifold exogenic, endogenic, iatrogenic, hidden and mute disturbancy focus
- Often we find fatal combinations of different disturbancy fields

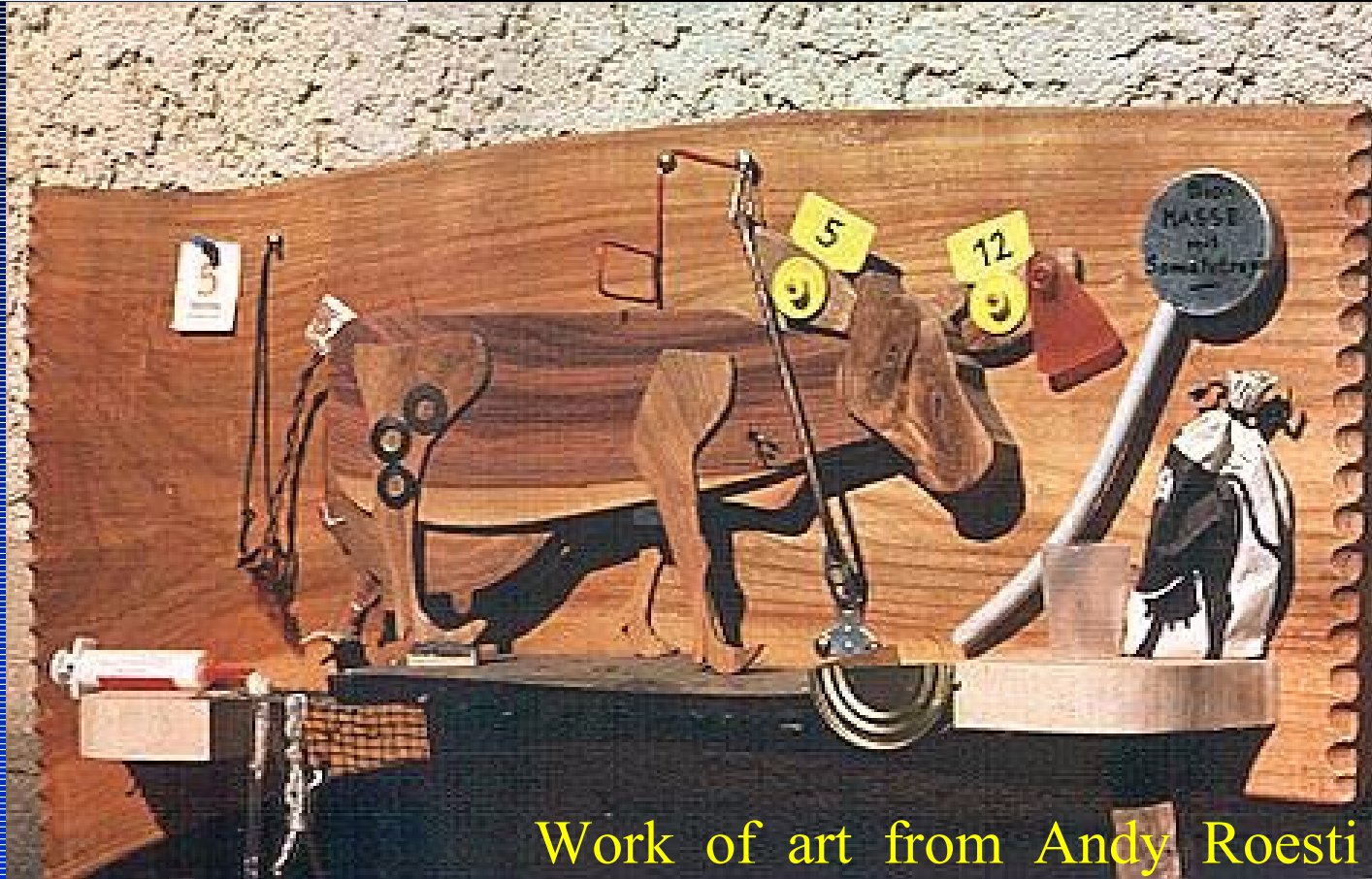
Disturbancy foci



% Heavy metal pollution and viral contamination: 28. 07. 1999 - 28. 07. 2000



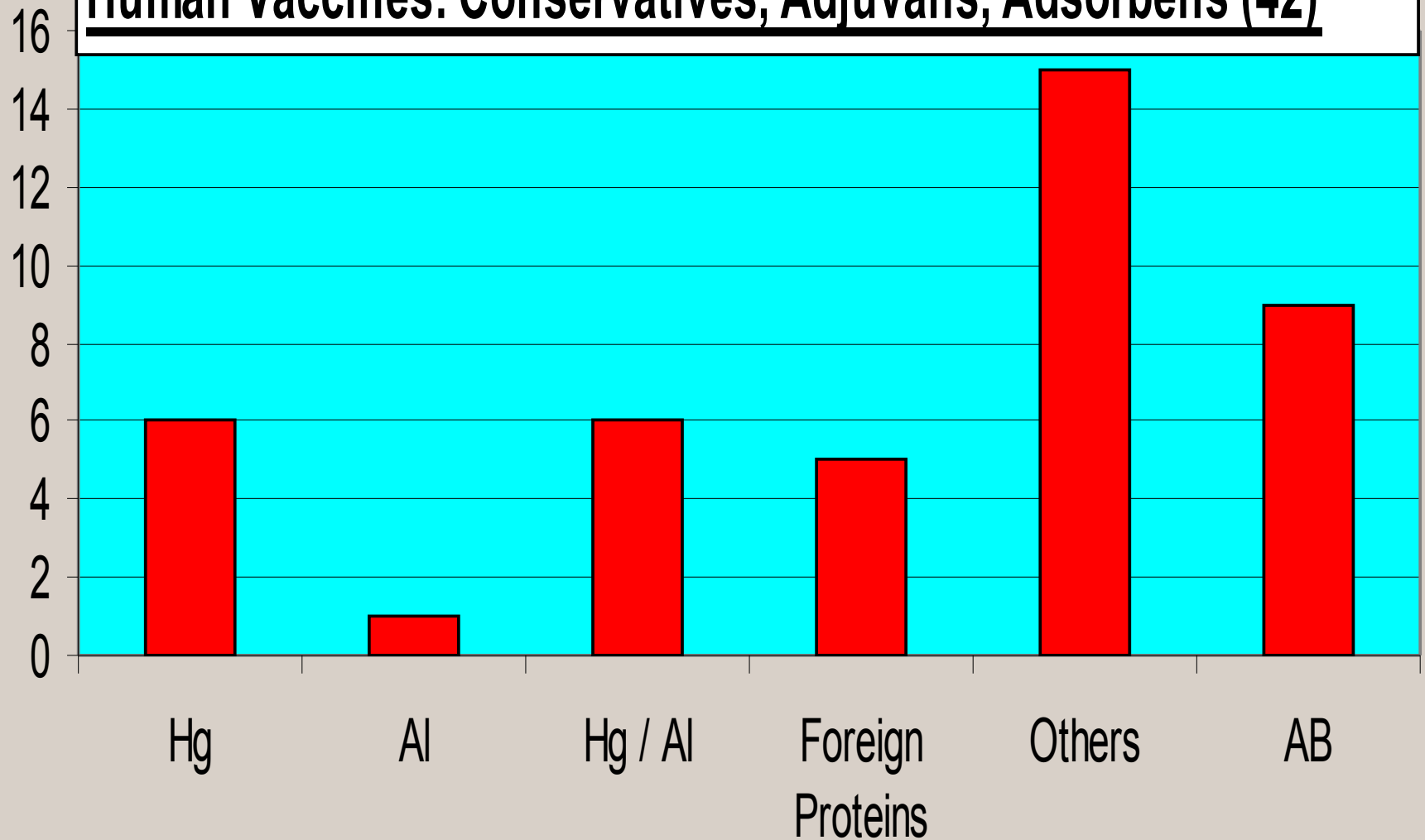
5 to 12 COW



Work of art from Andy Roesti



Human Vaccines: Conservatives, Adjuvans, Adsorbents (42)



YINTANG (EX-HN 3)



16. 04. 2001

EMLA Congress Moscow 2001

LU 11-1

KI 3 (Taixi)



16.04.2001

EMLA Congress Moscow 2001

01.05.11

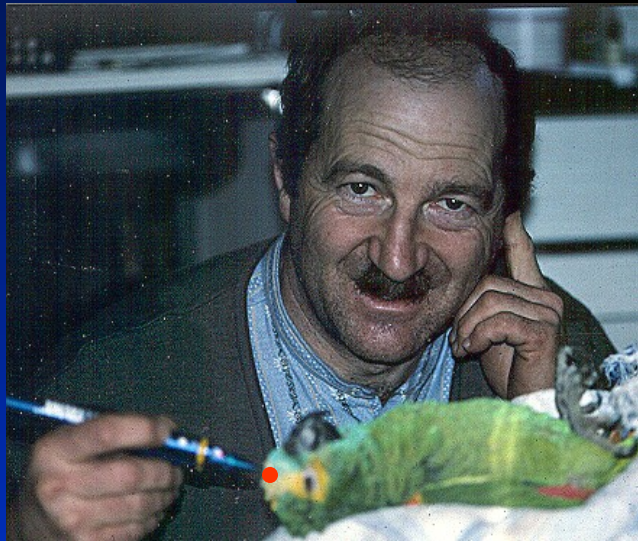
Checking for Oscillation



01.05.11

Verification of the Oscillation at the patient

- Oscillation is verified over the Extrapoint YINTANG (EX-HN 3), LU 11-1, KI 3 (Taixi) by means of the antioscillating Bahr Fr. 5



01.05.11

Direct & indirect VAS-pulse-control

Inversion Definition

- **Inversion is a reflectory blockage of the Ggl. Stellatum, or a mechanical blockage of the first rib**
- **This causes a complete exchange of the reflectorial behaviour of the sympathetic and parasympathetic areas of the body**
- **The swimming trunk area and the area above the clavicle becomes sympathetic and the rest of the body, below the clavicle, becomes parasympathetic**



16.04.2001

EMLA Congress Moscow 2001

01.05.11

Inversion



Andy's Paradigm of HHHH Homo-Hippo / Hound-Healer Harmony

- Often the pet-owner is psycho-somatically in a worse condition than the patient, sometimes he may even faint
- Separate him, in order to be able to treat the animal adequately
- If you fail healing your patient, treat the owner and bring everything into harmony
- The animal is only the resonance box of the owner

01.05.11

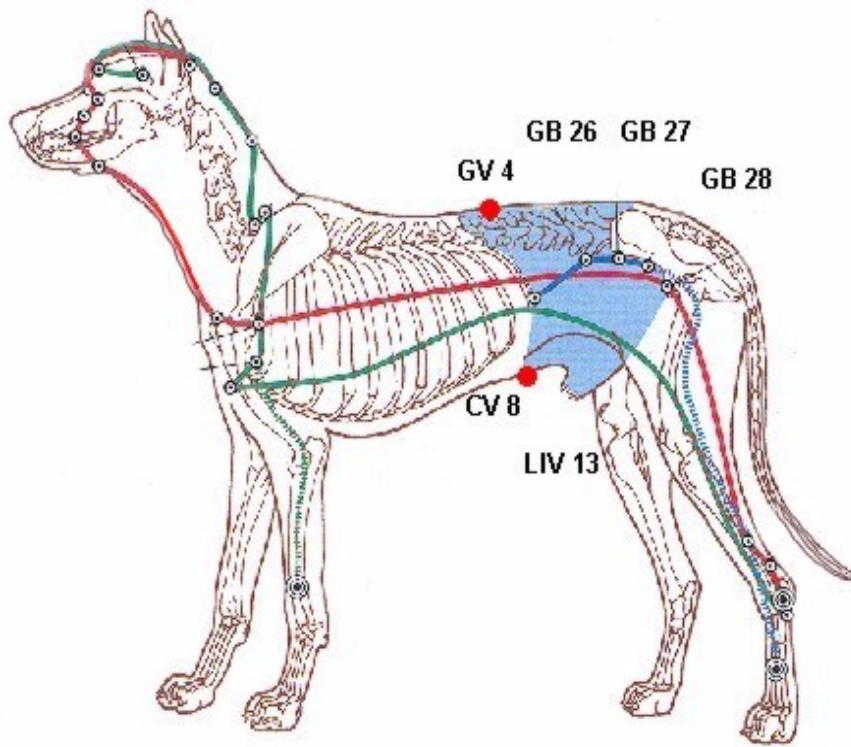


Communicate now - LASER



Dai Mai – The Middle

Girdle Vessel



01.05.11

My Goal is:

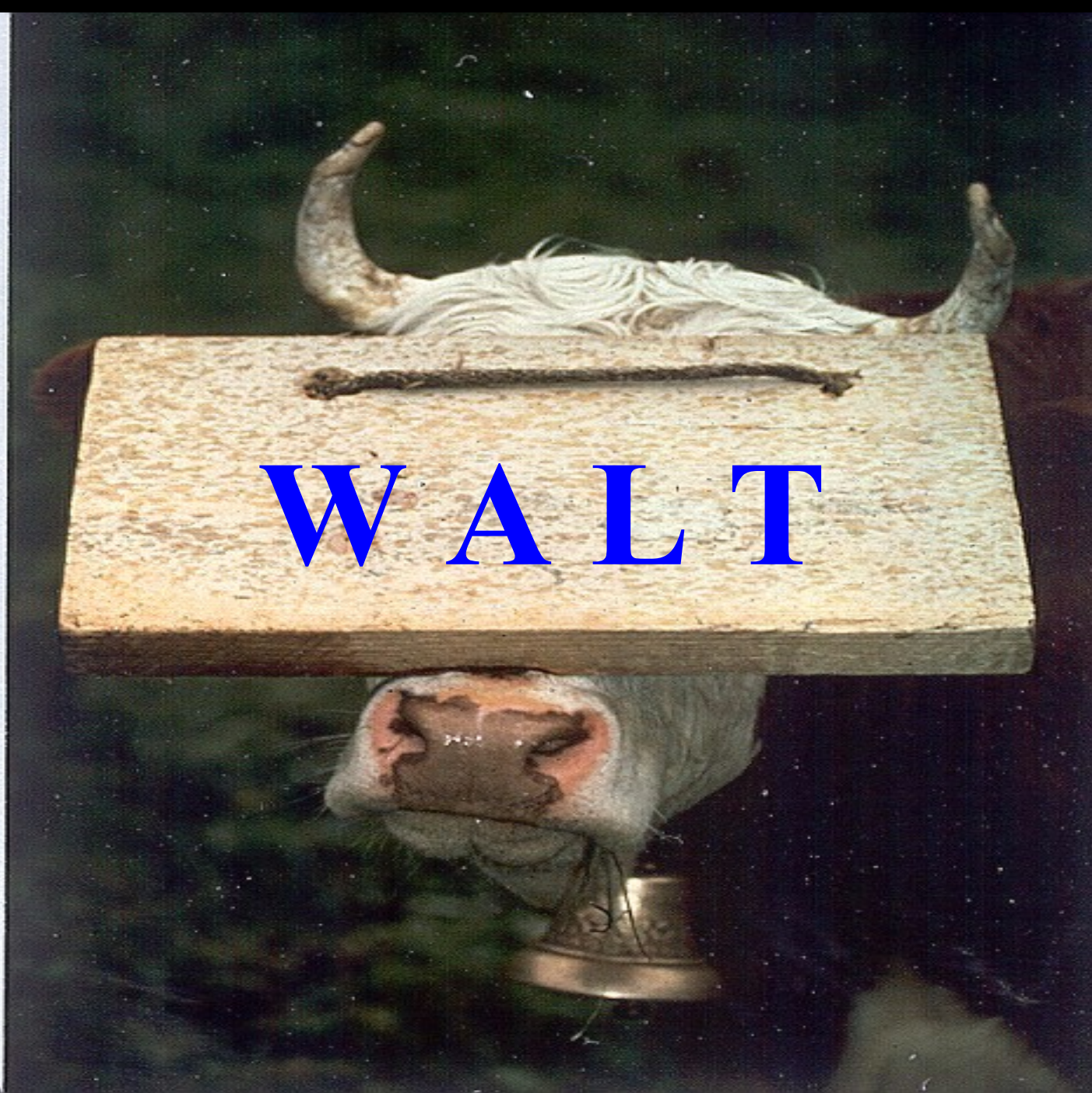
- **To be able, as a Veterinarian, to heal (not to treat) Rider & Horse, Owner & Pet, Farmer & Cows by administering:**
- **„Light“ (Cosmic Qi, Coherent Light, LASER),**
- **„Water & Salt“ (Rock Water & Crystallised Salt),**
- **„Movement & Breath“ (~Vacuumistation, Qi-Gong, Exercise virtually affects every system of our body positively).**
- **I am shure, that anybody can become a complementary Doctor.**
- **Light & Laser is only one additional option to heal**

What does it means ?

- **LLL Diagnostic & Therapy is an indispensable instrument for medicin in the future**
- **Anybody will be able to handle a LASER correctly. It needs additional studies and for a practitioner some courrage to jump in such an adventure (price, knowhow)**
- **The utmost exact verification to cheque Resonance is the VAS (Vaso autonomic signal) resp. RAC (Réflex auriculo cardiac)**

Next Steps:

- We should organise VAS/RAC – Seminars.
→ Controle-System
- We should organise LLL Seminars.
→ Theory, Tecnique, biostimulating & biodestructive Effects of LLL
- We should organise LASER - Seminars
with practical treatments. Racing horces, Farm animals, Pets and Owners



WALT

01.05.1

Wake up and open your eyes !



01.05.11

Thank you - Love each other



01.05.